

STATE OF ARKANSAS
STATE HIGHWAY COMMISSION

FISCAL YEAR	Job No.	SHEET NO.	TOTAL SHEETS
1930	7141	1	17

INDEX OF SHEETS

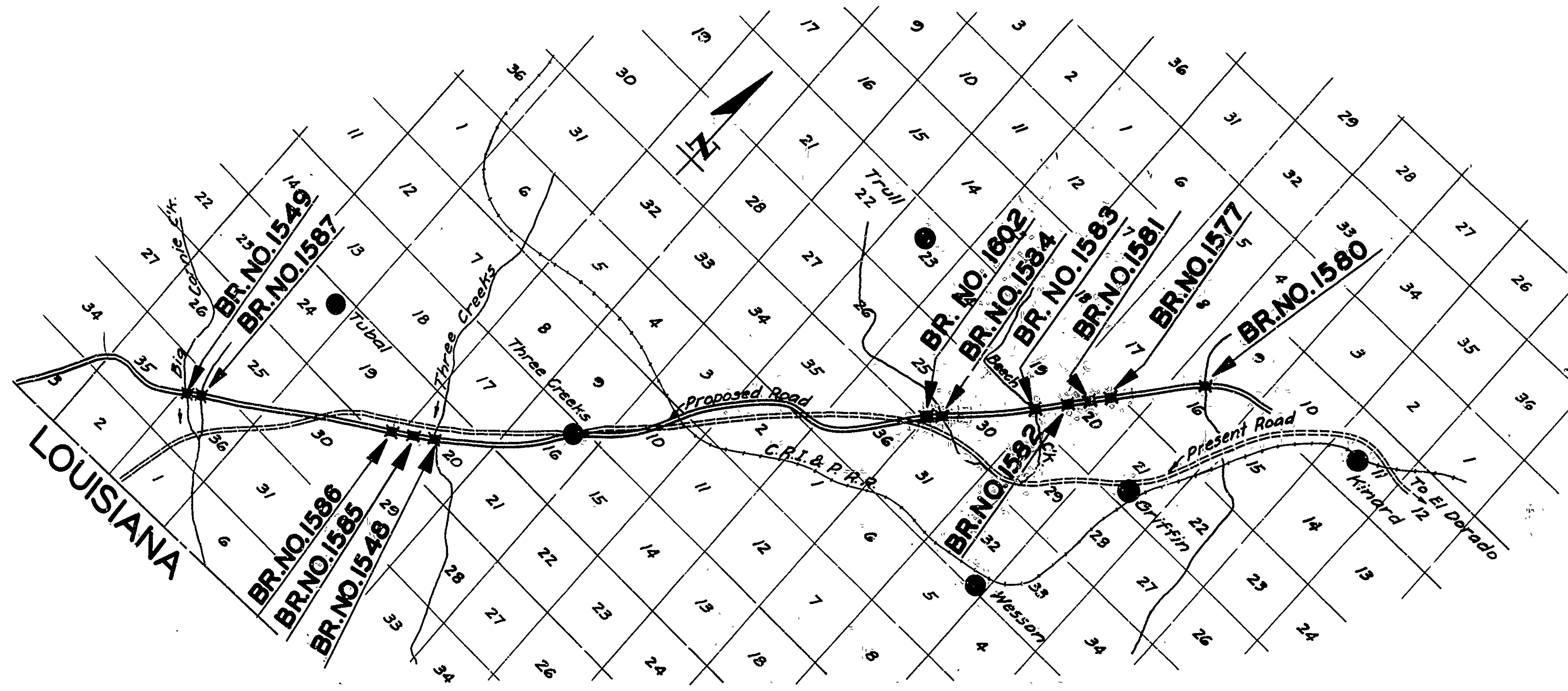
Sheet No.	Dwg. No.	Title
1	2781	Title Sheet
2	2782	Layout of Br. No. 1580
3	2081	Standard 19' Timber Trestle - 24'-0" Rdy.
4	2783	Layout of Br. No. 1577
5	2146	Std 38' I-Beam Span - 20'-0" Rdy.
6	2784	Layout of Br. No. 1581 & 1582
7	2785	Layout of Br. No. 1583
8	2786	Layout of Br. No. 1584
9	2787	Layout of Br. No. 1548
10	91	Std 60' Steel Highway Span - 20' Rdy.
11	2788	Details of Piers - Br. No. 1548
12	2789	Layout of Br. Nos. 1585 & 1586
13	2790	Layout of Br. No. 1587
14	2791	Layout of Br. No. 1549
15	1093	Std. 80' Low Truss Span - 20' Rdy.
16	2792	Details of Piers - Br. No. 1549
17	2071	Std 19' Timber Trestle - 20' Rdy.

PLAN OF PROPOSED BRIDGES
ON
EL DORADO-THREE CREEKS ROAD
UNION COUNTY

ROUTE 15 SEC. 1
JOB NO 7141

QUANTITIES

Item No.	SP & 12	Description	Quantity
"	"	Earth Excavation	2505 Cu. Yds.
"	"	Dry Excavation	117 "
"	5P & 52	Untreated Timber	286 M. Ft. B.M.
"	5P & 52	Treated Timber	275,414 "
"	5P & 52	Treated Timber Piling	13,396 Lin. Ft.
"	5P & 52	Treated Timber Die Cutoff	894 "
"	54	Class 3 Concrete	971.67 Cu. Yds.
"	55	Reinforcing Steel	191,832 Lbs.
"	56	Structural Steel (Beams)	17,725 "
"	56	Structural Steel (Trusses)	111,833 "



The Specifications adopted by the State Highway Commission, May 30th., 1925 apply with subsequent revisions and Special Provisions noted apply to this Project.

Pamphlet	Revised	Date
A	Revised	Sept. 1st, 1926
B		
C		
D	Revised	July 1st, 1928
E		
F		
G		
H	Revised	Oct. 1st, 1928
I		
J	Revised	Jan. 1st, 1929
K		
L	Revised	Jan. 1st, 1929

SPECIAL PROVISIONS

Item	No. of Sheets
Earth Excavation	3
Timber Structures	12

LAYOUT

Scale: 1" = 1 Mi.

LENGTH OF PROJECT = 2347'-6 1/2" = .444 Mi.
LENGTH OF BRIDGES = 2242'-1" = .424 Mi.
LENGTH OF EMBANKMENT = 105'-5 1/2" = .02 Mi.

Revised 8-17-30
Bridge No. 1602 Added

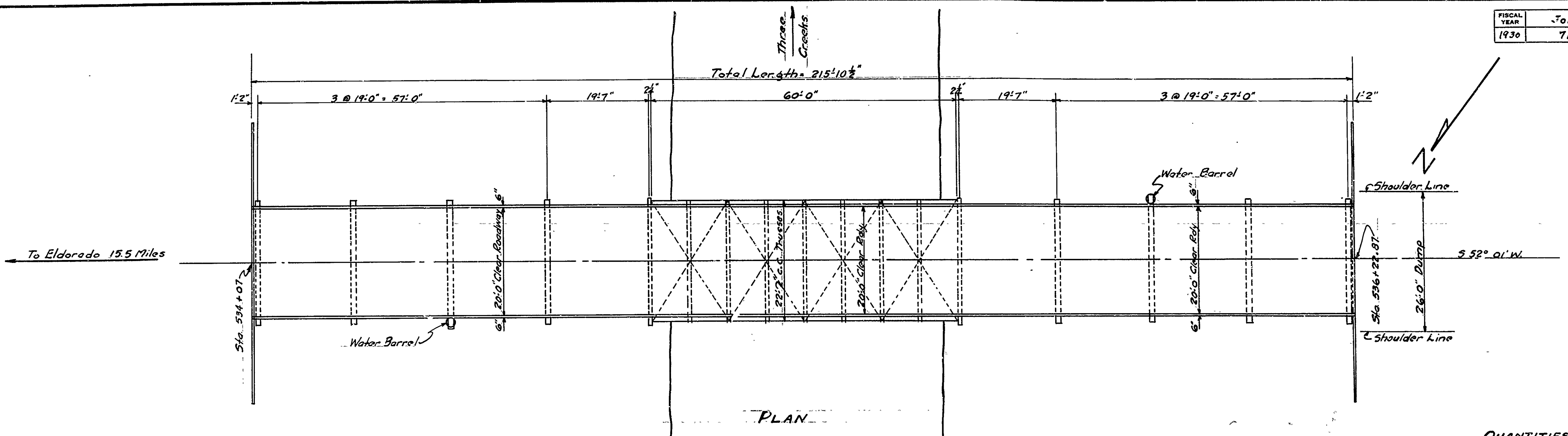
APPROVED: [Signature]
CHAIRMAN - STATE HIGHWAY COMMISSION

APPROVED: [Signature]
STATE HIGHWAY ENGINEER

N.B. Lane
BRIDGE ENGINEER

BRIDGES NO. 1548-1549-1577-1580
1581-1582-1583-1584
1585-1586-1587-1602. DRAWING No. 2161

FISCAL YEAR	Job No.	SHEET No.	TOTAL SHEETS
1930	7141	9	17



QUANTITIES

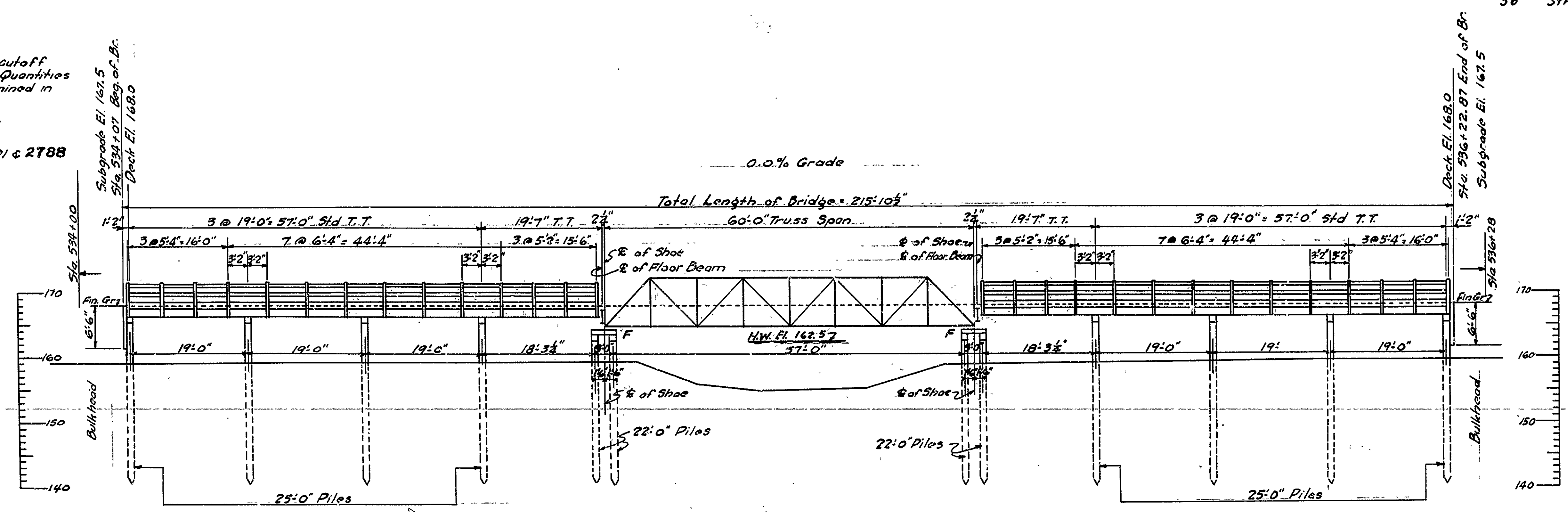
Item	Description	Quantity	Unit
S.P. # 13	Earth Excavation	200	Cu. Yds.
S.P. # 52	Untreated Timber	.026	M. Ft. B.M.
S.P. # 52	Treated Timber	22,722	"
S.P. # 52	" Piling	1280	Lin. Ft.
S.P. # 52	" Cut-off	116	"
54	Class "5" Concrete	104.92	Cu. Yds.
55	Reinforcing Steel	20130	Lbs.
56	Structural Steel (Trusses)	45294	"

Notes

Lengths of Piling shown include cutoff and are assumed for Estimating Quantities only. Actual Lengths to be determined in the field.

Bridge Contractor to complete Embankment

For Details, See Dwg. No. 2071, 91 & 2788



B.M. Elev. 160.82
Nail in root of 24" Beech
50' R.H. Sta. 534+75

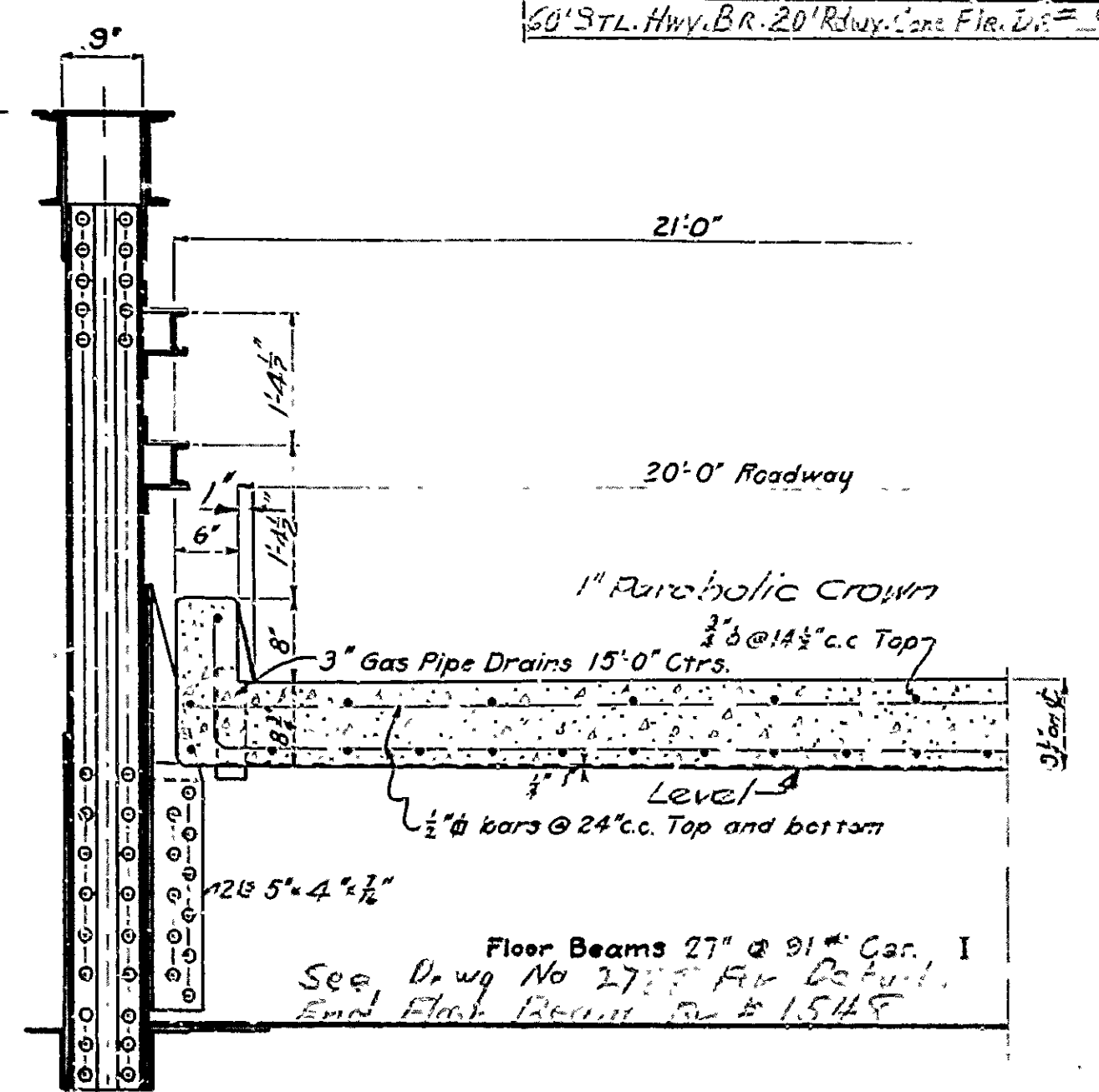
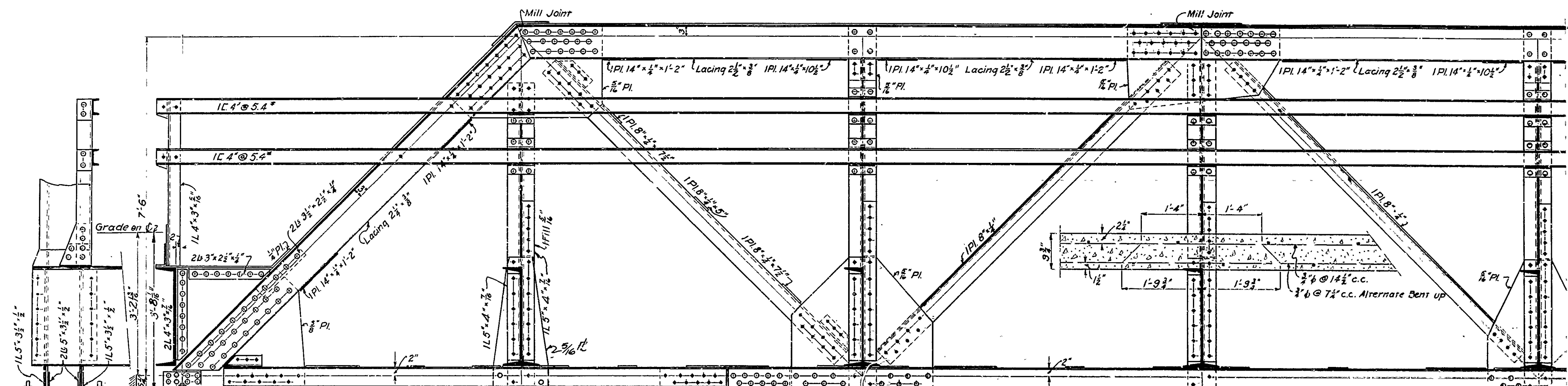
D.A. of Three Creeks
32,000 Acres

LAYOUT
BRIDGE No. 1548
ELDORADO-LA. STATE LINE ROAD
UNION CO.
ROUTE 15 SEC. 1
ARKANSAS STATE HIGHWAY COMMISSION
LITTLE ROCK, ARK.
Drawn By: *F.R.B.* Date: 7-9-30
Traced By: *F.B.* Date: 7-11-30
Checked By: _____ Date: _____
BRIDGE NO. 1548 DRAWING NO. 2787
Scale: 1 in. = 10 ft.

M.B. Linn
BRIDGE ENGINEER

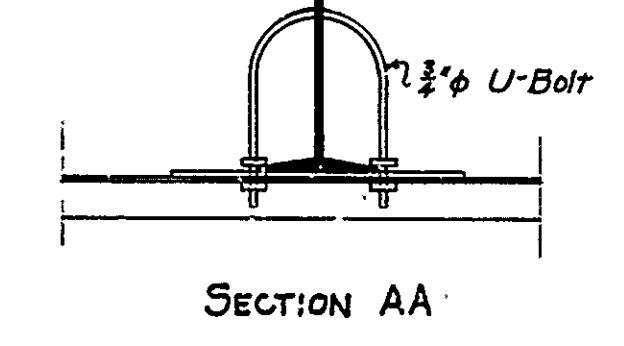
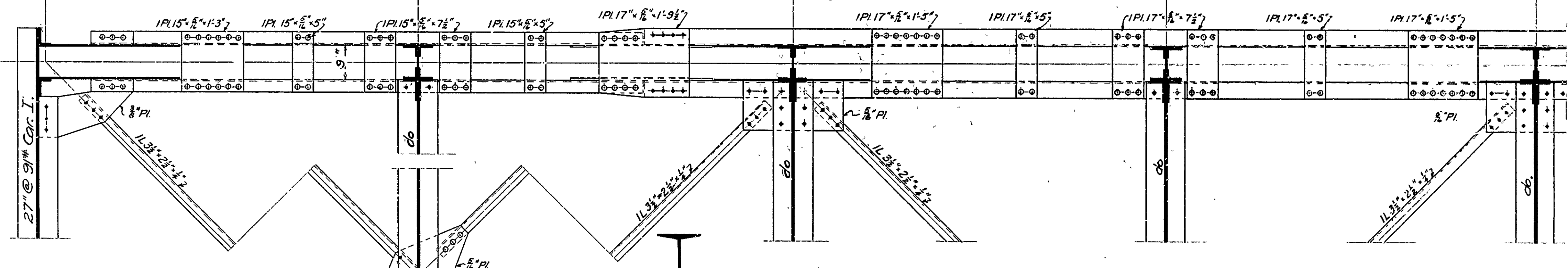
FED. ROAD DIST. NO.	STATE	FED. AID PROJ. NO.	FISCAL YEAR	SHEET NO.	TOTAL SHEETS
6	ARK.				

50' ST. HWY. BR. 20' ROADWAY CONCRETE FLOOR DIST. # 91



Use Fixed Shoes both Ends Br #1548

Symmetrical about C

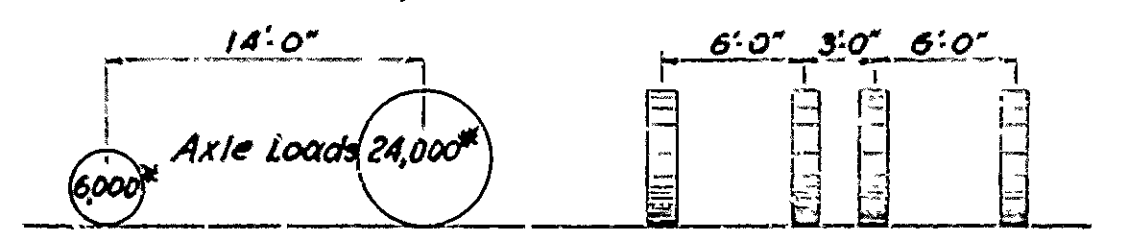


FLOOR BEAMS

D.L.M.	$\frac{1}{8} \times 25,920 \times 22$	= 71,300
L.L.M.	$22,350 \times 10.25$	= 157,080
IMPACT	30% of L.L.	= 47,124
TOTAL MOM.		= 275,404

$\frac{275,404 \times 12}{16,000} = 206.5$ Sec. Modulus required
 Use: 27" Car. I @ 91# Sec. Modulus 238.3

SPECIFICATIONS
 LIVE LOAD: Concentrated -- 2-15 Ton Trucks as shown below. Equivalent uniform load -- 130 lbs. per sq. ft. of roadway.

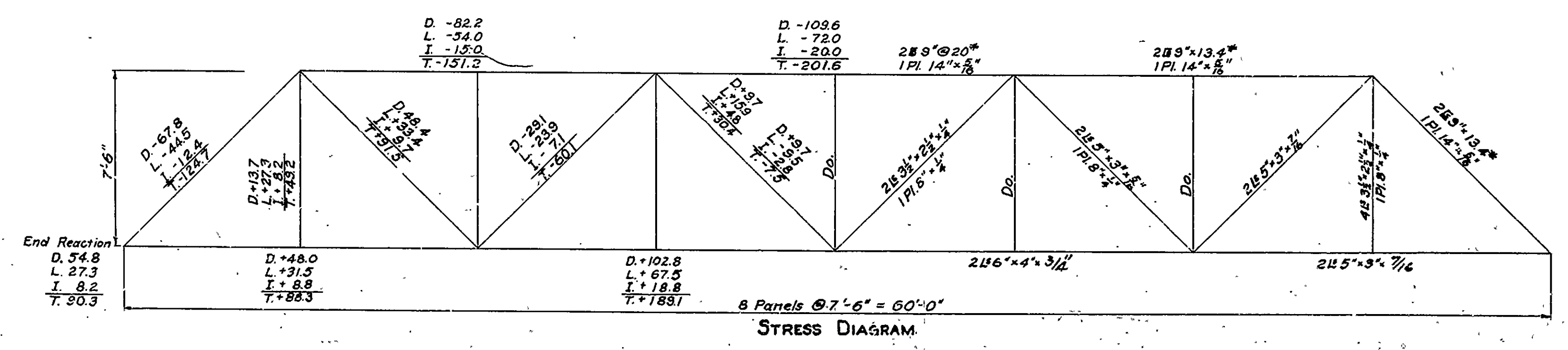


IMPACT $\frac{100}{L + 300}$ (L = LENGTH)

UNIT STRESSES: See ARKANSAS HIGHWAY DEPARTMENT Specifications May 30, 1925.
 Rivets: -- $\frac{3}{4}$ " diam. & open holes $\frac{1}{8}$ " diameter.
 All field connections riveted. Rivet holes in tension members are to be spaced so that not more than one hole is deducted from the area of cross-section of each angle at the point of maximum stress.
 Shop paint: -- One coat of RED lead & raw linseed oil.
 Field paint: -- Two coats of different colors as approved by the engineer.
 Concrete floor slab is Class "S". 1 inch has been added for wear. Chamfer exposed edges $\frac{1}{4}$ ".
 Reinforcing steel to be deformed bars of Structural or Intermediate grade.

ESTIMATED QUANTITIES

STRUCTURAL STEEL - LBS.	43,100
REINFORCING STEEL - LBS.	6,992
CONCRETE - Cu. yds. Class "S"	39.3

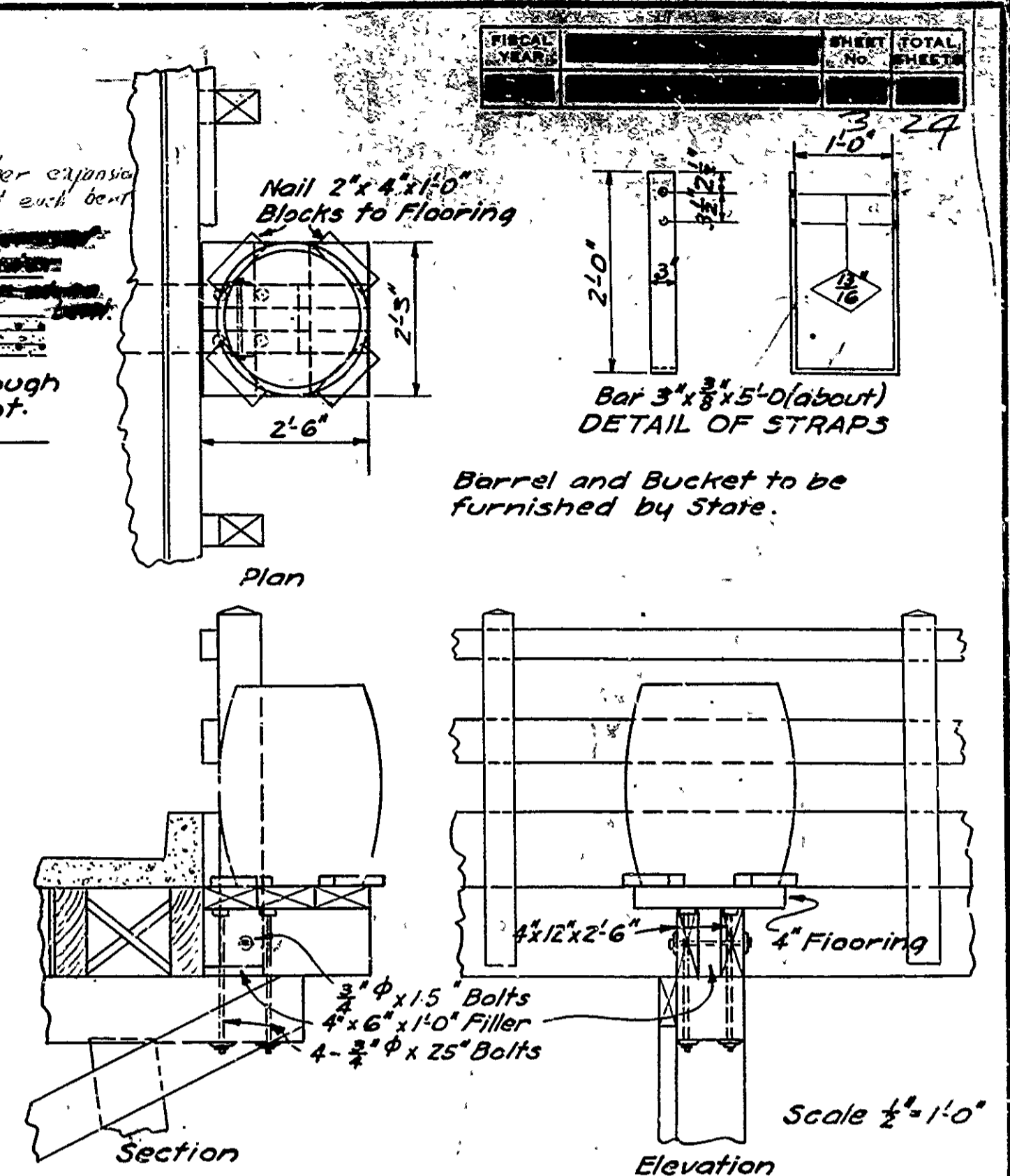
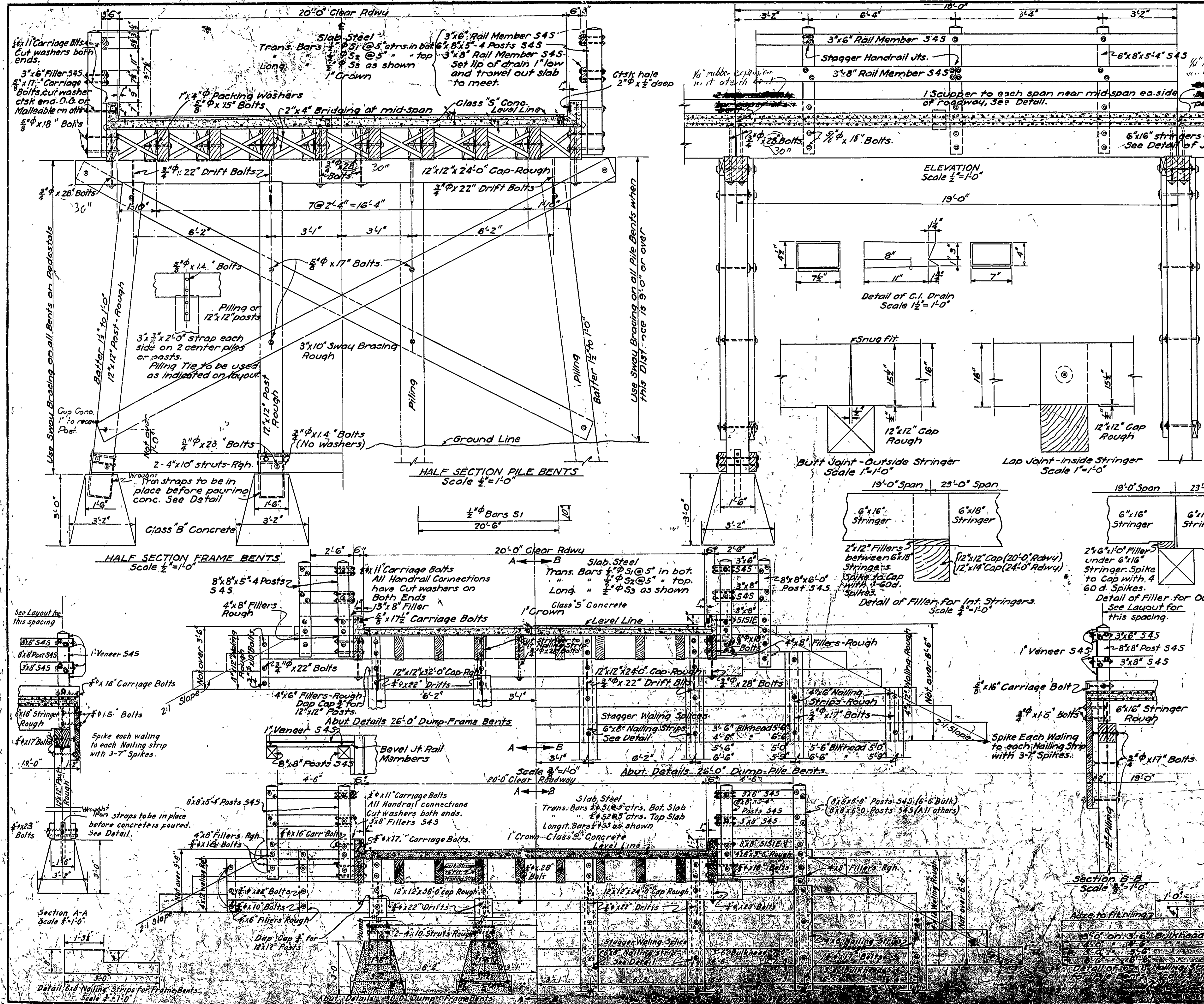


Note: --- This drawing is general only. Shop drawings must be made in compliance with the specifications submitted and approved by the engineer before fabrication is begun.

DESIGNED BY: R.C.G.
 DRAWN BY: R.E.H.
 CHECKED BY:
 DATE: JUNE 3, 1927
 REVISIONS: 9-23-27

Approved Gen. Rev. 7-8-30
 R.E.H.

STANDARD PLAN
60 FT. STEEL HIGHWAY BRIDGE
20 FT. ROADWAY - CONCRETE FLOOR
 ARKANSAS HIGHWAY DEPARTMENT
 LITTLE ROCK, ARK.
 APPROVED: _____
 CHAIRMAN, ARKANSAS STATE HIGHWAY COMMISSION.
 APPROVED: _____
 STATE HIGHWAY ENGINEER.
 RECOMMENDED FOR APPROVAL: _____
 STATE HIGHWAY BRIDGE ENGINEER.
 JUNE 1927
 Drawg. No. 91



	Treated Timber	Untreated Timber
Rail Posts	6x8, 8x8"	S 45
Members	3x6, 3x8"	S 43
Post Fillers	3x6, 3x8"	S 43
Falloe Guard	8x8"	S 15 E
Stringers	6x16"	Rough
Bridging	2x4"	
Caps	12x12"	
Waling	4x6, 4x12"	
Fillers	4x6, 4x8"	
Nailing Strips	4x6, 6x8"	
Sway Bracing	3x12"	
Posts (Frame Bent Only)	12x12"	
Struts	4x10"	
Supports (Water Bbl.)	4x12"	
Flooring	4x10"	
Blocks	2x4"	
Fillers	4x6"	

Notes

Veneer 1x6, 1x8" S 45

All timber and piling to be Southern Yellow Pine or Pacific Coast Douglas Fir.

All timber to be framed and bored before treatment.

The preservative used for the treatment of timber and piles shall be of Grade 1 of Creosote Oil for Structural Timber.

All timber, except 1" Veneer on Handrail Turnouts, shall be treated with a ten (10) pound treatment of creosote oil by the empty cell process.

One inch veneer boards on handrail turnouts to be given three coats of white lead paint.

Stringers to be dapped at ends and to be spiked to cap with 2-60 d. nails in each end of stringer.

Malleable or cast iron washers to be used under all heads and nuts of machined bolts unless otherwise noted.

All piling shall be treated with twelve (12) pound treatment of creosote oil by the empty cell process.

Concrete pedestals to be Glass B' and to poured in the dry.

Concrete deck to be Class 'S'.

All exposed corners to have 3/4" chamfer unless otherwise noted.

Reinforcing steel to be deformed bars of structural or intermediate grade.

Roadway drains to be paid for at unit price bid for reinforcing steel.

Specifications: Ark. Standard Road & Bridge Specifications, adopted May 30, 1925 & Revised.

All dimensions shown are center to center of bar.

DETAILS

19'-0" STANDARD TIMBER TRESTLE

CONCRETE FLOOR 20'-0" CLEAR RDWY.

ARKANSAS STATE HIGHWAY DEPARTMENT

LITTLE ROCK, ARK.

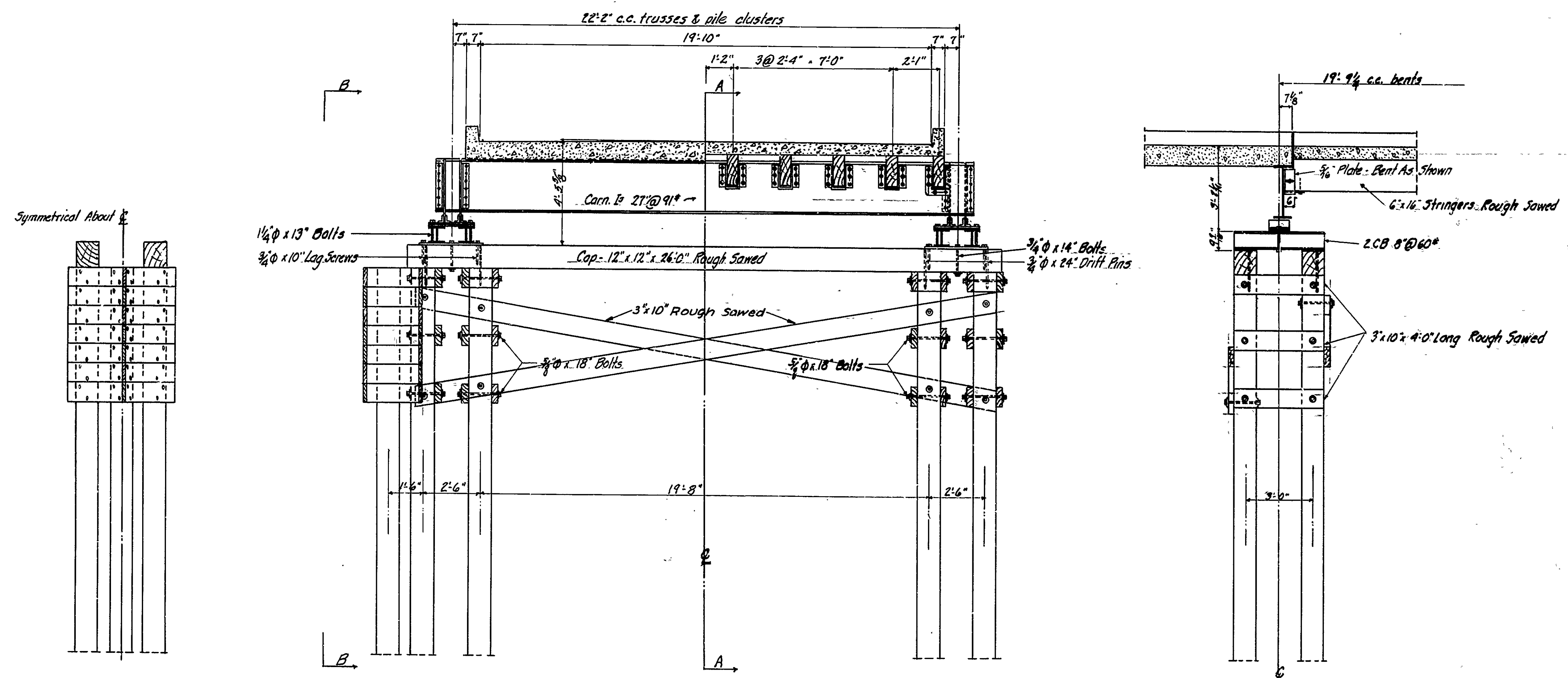
Drawn by E.P.E. Date 12-29-25

Checked by J.C. Date 1-20-26

BRIDGE NO. _____ DRAWING NO. 2071

FISCAL YEAR	JOB NO.	SHEET NO.	TOTAL SHEETS
1930	7141	11	17

For Superstructure Details See Drwg Nos. 91 & 2071

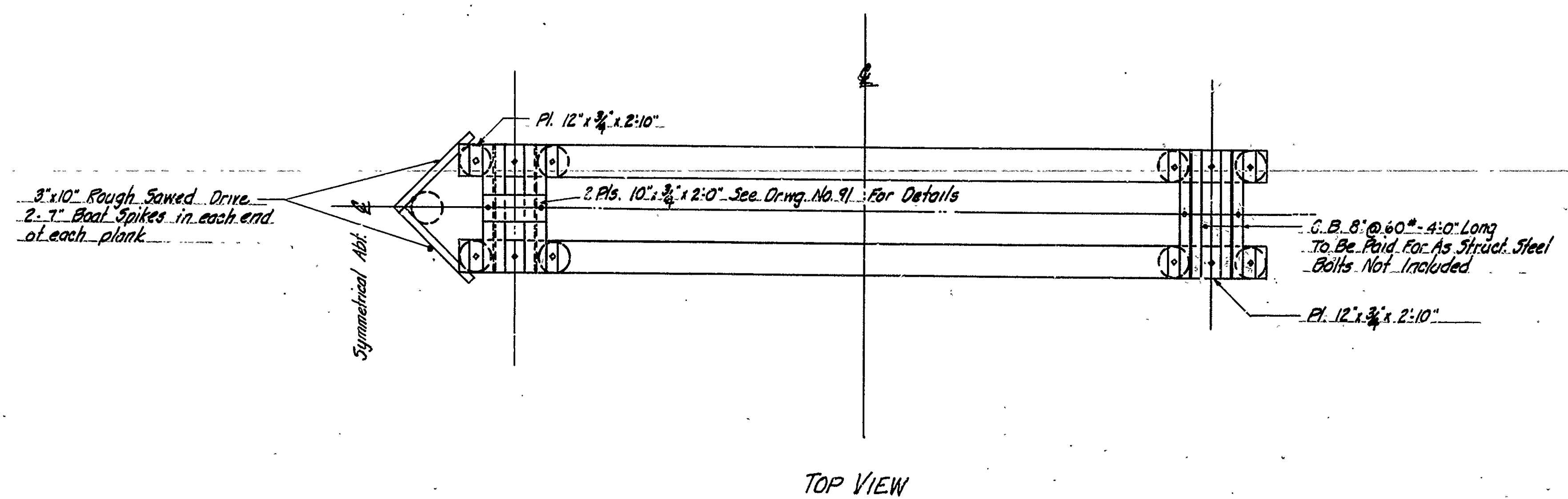


VIEW B-B

HALF ELEVATION OF PIER FROM STEEL SPAN SIDE
Note: Nose is on upstream side of pier only

HALF ELEVATION OF PIER FROM TREATED TIMBER SPAN SIDE

SECTION A-A



TOP VIEW

DETAILS OF
PIERS
FOR BRIDGE OVER THREE CREEKS
ON EL DORADO - LOUISIANA LINE ROAD - UNION CO, ARK.
ROUTE 15 SEC. 1
ARKANSAS STATE HIGHWAY COMMISSION
LITTLE ROCK, ARK.

Drawn By: *None* Date: 7-10-30
Traced By: *None* Date: 7-11-30
Checked By: _____ Date: _____
Scale: _____ in. = 1 ft.

BRIDGE NO. 1548 DRAWING NO. 2780

W.B. Lamm
BRIDGE ENGINEER